

RECORD DRAWINGS

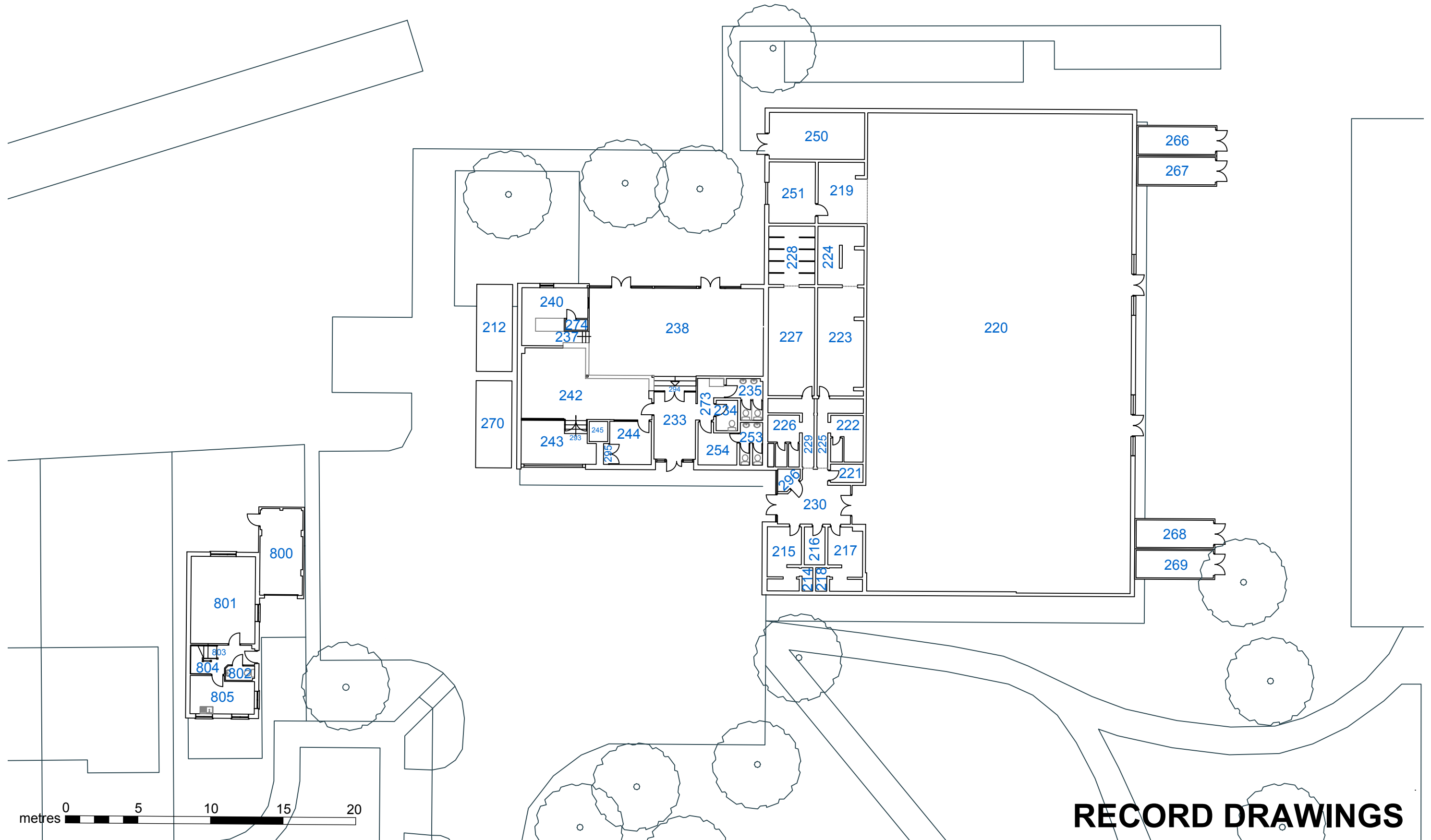


HCC Property Services,
Three Minsters House,
76 High Street, Winchester SO23 8UL.
tel: (01962) 847801

Notes	
1 This drawing is © copyright Hampshire County Council 2012. No unauthorised reproduction permitted. All rights reserved.	3 This map is reproduced from Ordnance Survey material with the permission of Ordnance Survey on behalf of the controller of Her Majesty's Stationery Office © Crown Copyright. Unauthorised reproduction infringes Crown Copyright and may lead to prosecution or civil proceedings. (100019180), (2012)
2 No dimensions are to be scaled from this drawing	

rev	description	date	by
A	Plans updated following site survey	14/02/12	HJP
B	Updated for Contract purposes	07/02/13	HJP
C	HSS amendments, Changes made to Tech Block	30/10/14	I.S

PROJECT				SHEET CONTENTS			
The Hayling College				Units 001-003,025,032,033			
Hayling Island, PO11 0NU				Ground Floor Layout			
4147-10008000935				Sheet 3 of 6			
SCALE		DATE	DRAWN.	CHKD.	DRAWING No.		REVISION
1:125@ A1 1:250@ A3		2005/2006	CadCap	---	01_Rec/003		C
FILE REF. 4147-10008000935-TheHaylingCollege.dwg				Property Services			



RECORD DRAWINGS



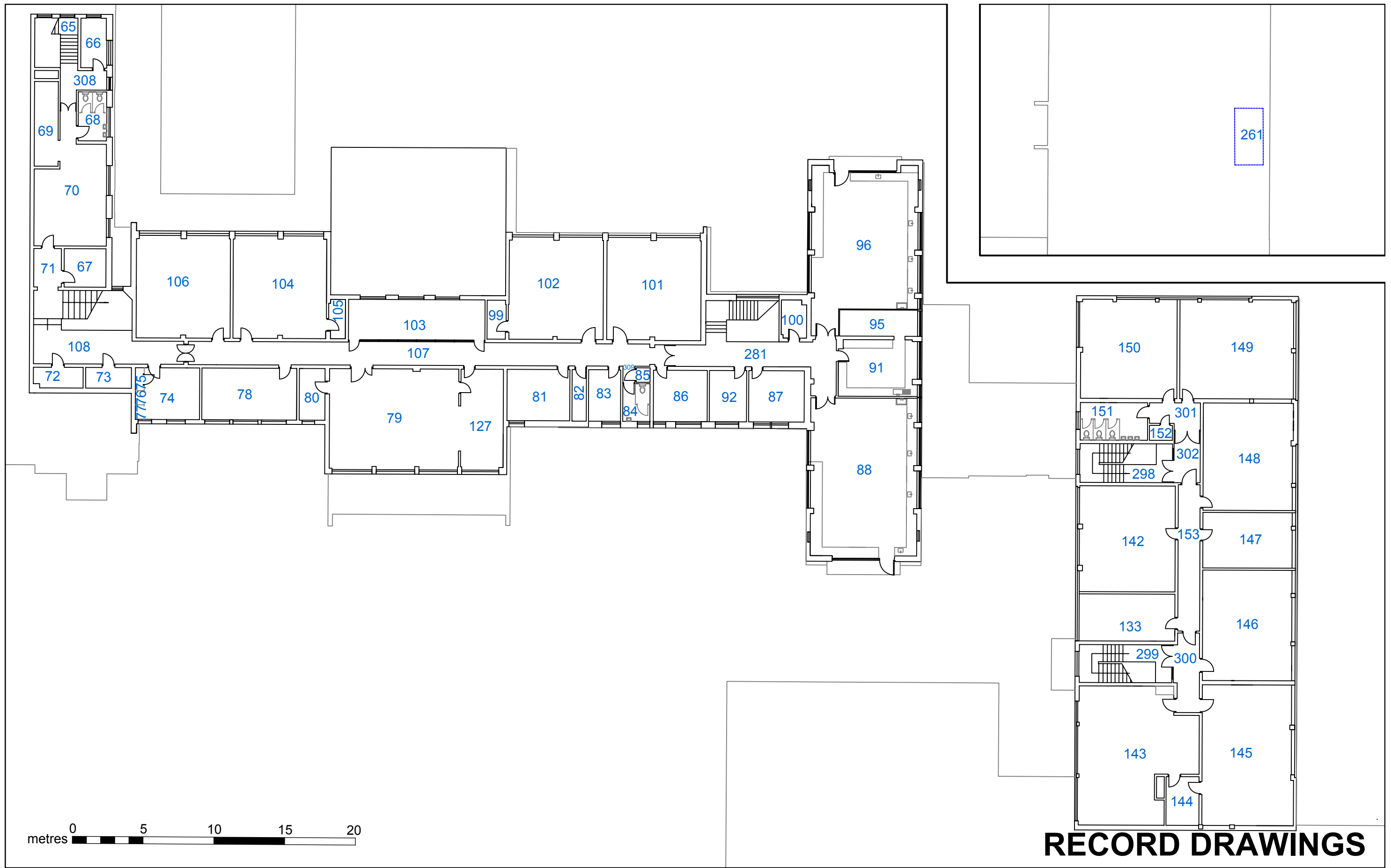
HCC Property Services,
Three Minsters House,
76 High Street, Winchester SO23 8UL.
tel: (01962) 847801

Notes	
1 This drawing is © copyright Hampshire County Council 2012. No unauthorised reproduction permitted. All rights reserved.	3 This map is reproduced from Ordnance Survey material with the permission of Ordnance Survey on behalf of the controller of Her Majesty's Stationery Office © Crown Copyright. Unauthorised reproduction infringes Crown Copyright and may lead to prosecution or civil proceedings. (100019180), (2012)
2 No dimensions are to be scaled from this drawing	

rev	description	date	by
A	Plans updated following site survey	14/02/12	HJP
B	Updated for Contract purposes	07/02/13	HJP
C	HSS amendments, Changes made to Tech Block	30/10/14	I.S

PROJECT				SHEET CONTENTS	
The Hayling College				Units 005, 027-029	
Hayling Island, PO11 0NU				Ground Floor Layout	
4147-10008000935				Sheet 4 of 6	
SCALE		DATE	DRAWN.	CHKD.	DRAWING No.
1:125@ A1 1:250@ A3		2005/2006	CadCap	---	01_Rec/004
FILE REF. 4147-10008000935-TheHaylingCollege.dwg					REVISION
					C





HCC Property Services,
Three Minsters House,
76 High Street, Winchester SO23 8UL.
tel: (01962) 847801

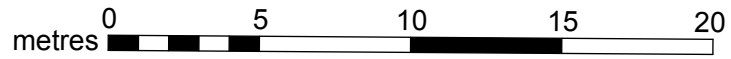
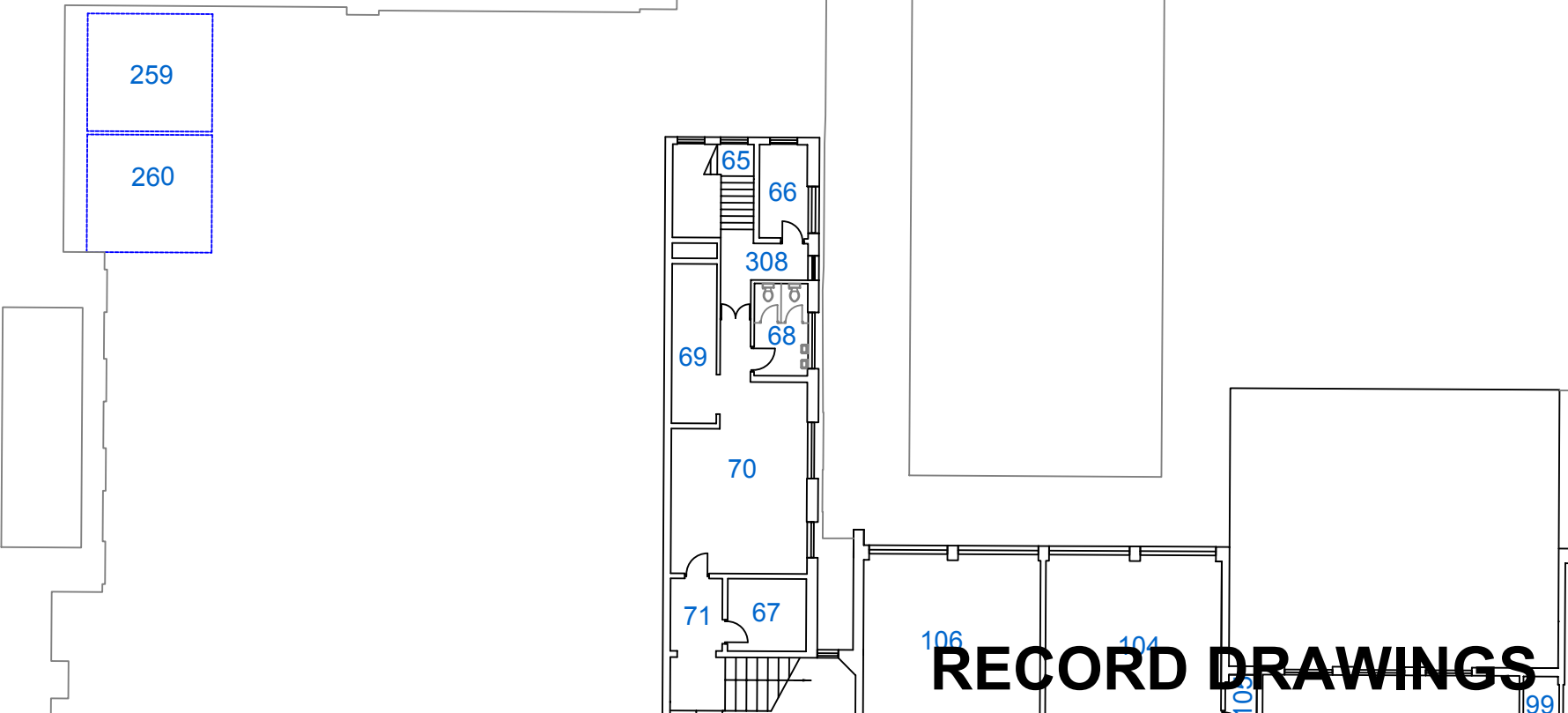
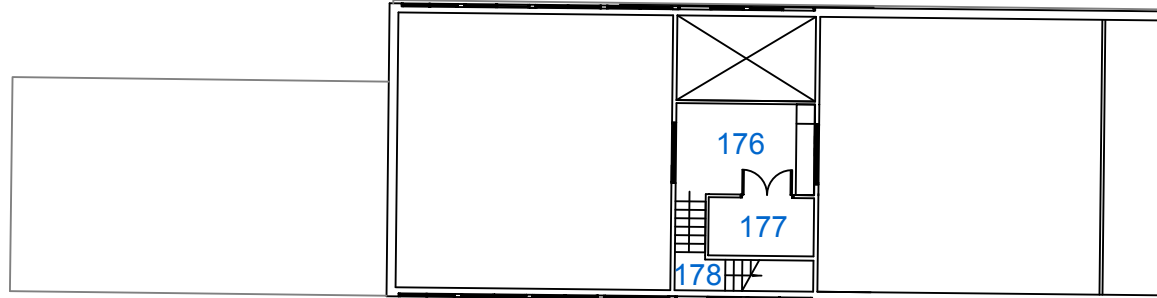
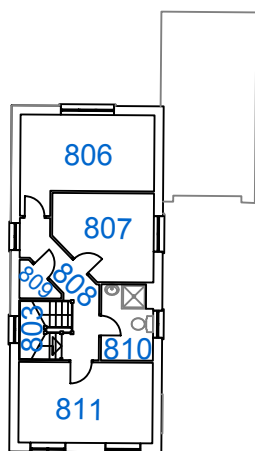
Notes	
1 This drawing is © copyright Hampshire County Council 2012. No unauthorised reproduction permitted. All rights reserved.	3 This map is reproduced from Ordnance Survey material with the permission of Ordnance Survey on behalf of the controller of Her Majesty's Stationery Office © Crown Copyright. Unauthorised reproduction infringes Crown Copyright and may lead to prosecution or civil proceedings. (100019180), (2012)
2 No dimensions are to be scaled from this drawing	

rev	description	date	by
A	Plans updated following site survey	14/02/12	HJP
B	Updated for Contract purposes	07/02/13	HJP
C	HSS amendments, Changes made to Tech Block	30/10/14	I.S

PROJECT			
The Hayling College			
Hayling Island, PO11 0NU			
4147-10008000935			
SCALE	DATE	DRAWN.	CHKD.
1:125@ A1	2005/2006	CadCap	---
1:250@ A3			

SHEET CONTENTS	
Units 001 & 002	
First Floor/ Loft Layout	
Sheet 5 of 6	
DRAWING No.	REVISION
01_Rec/005	C
FILE REF. 4147-10008000935-TheHaylingCollege.dwg	





RECORD DRAWINGS



HCC Property Services,
Three Minsters House,
76 High Street, Winchester SO23 8UL.
tel: (01962) 847801

Notes

1 This drawing is © copyright Hampshire County Council 2012. No unauthorised reproduction permitted. All rights reserved.

2 No dimensions are to be scaled from this drawing

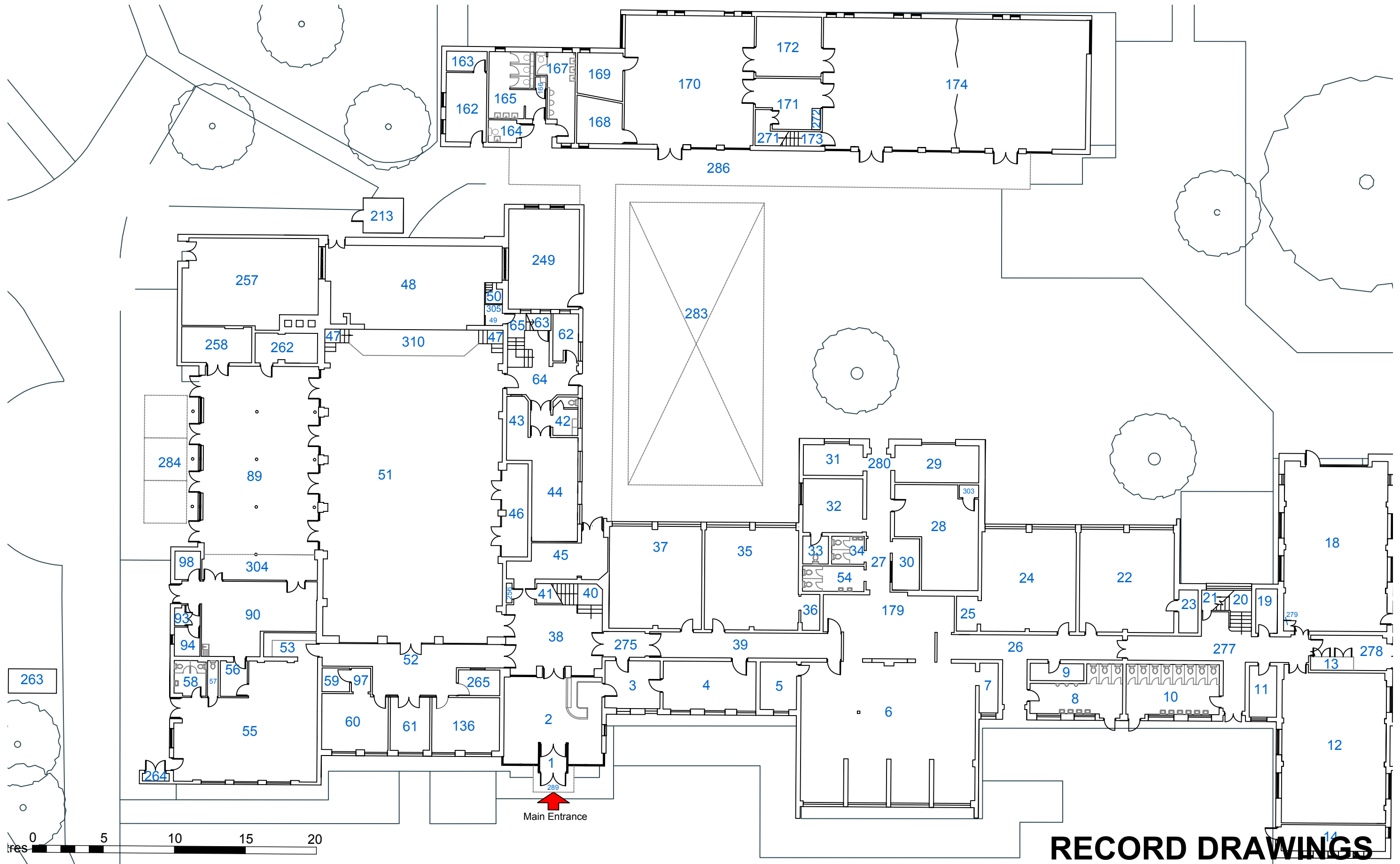
3 This map is reproduced from Ordnance Survey material with the permission of Ordnance Survey on behalf of the controller of Her Majesty's Stationery Office © Crown Copyright. Unauthorised reproduction infringes Crown Copyright and may lead to prosecution or civil proceedings. (100019180), (2012)

rev	description	date	by
A	Plans updated following site survey	14/02/12	HJP
B	Updated for Contract purposes	07/02/13	HJP
C	HSS amendments, Changes made to Tech Block	30/10/14	I.S

PROJECT			
The Hayling College			
Hayling Island, PO11 0NU			
4147-10008000935			
SCALE	DATE	DRAWN.	CHKD.
1:125@ A1	2005/2006	CadCap	---
1:250@ A3			

SHEET CONTENTS	
Units,001,026,027	
First Floor Layout	
Sheet 6 of 6	
DRAWING No.	REVISION
01_Rec/006	C
FILE REF. 4147-10008000935-TheHaylingCollege.dwg	






Hampshire
 County Council
 HCC Property Services,
 Three Minsters House,
 76 High Street, Winchester SO23 8UL.
 tel: (01962) 847801

Notes

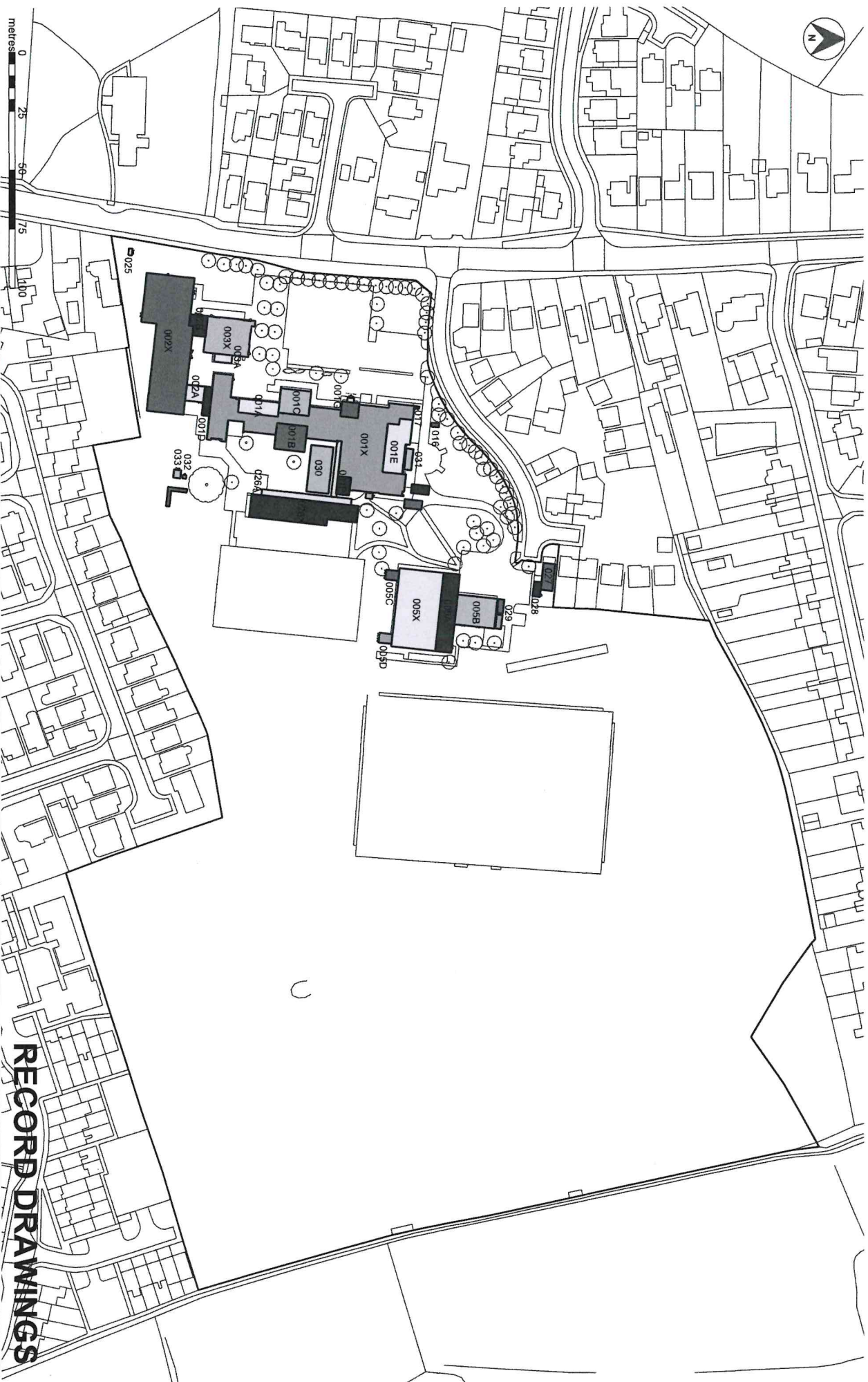
1 This drawing is © copyright Hampshire County Council 2012. No unauthorised reproduction permitted. All rights reserved.
 2 No dimensions are to be scaled from this drawing
 3 This map is reproduced from Ordnance Survey material with the permission of Ordnance Survey on behalf of the controller of Her Majesty's Stationery Office © Crown Copyright. Unauthorised reproduction infringes Crown Copyright and may lead to prosecution or civil proceedings. (100019180), (2012)

rev	description	date	by
A	Plans updated following site survey	14/02/12	HJP
B	Updated for Contract purposes	07/02/13	HJP
C	HSS amendments, Changes made to Tech Block	30/10/14	I.S

PROJECT
The Hayling College
Hayling Island, PO11 0NU
4147-10008000935

SCALE	DATE	DRAWN.	CHKD.
1:125@ A1	2005/2006	CadCap	---
1:250@ A3			

SHEET CONTENTS		REVISION	
Units,001,016,017,026,030 031,Ground Floor Layout Sheet 2 of 6		01_Rec/002 C	
DRAWING No. 01_Rec/002 FILE REF. 4147-10008000935-TheHaylingCollege.dwg		Property Services	



 Hampshire
County Council

HCC Property Services,
Three Ministers House,
76 High Street, Winchester SO23 8UL.
Tel: (01962) 847801

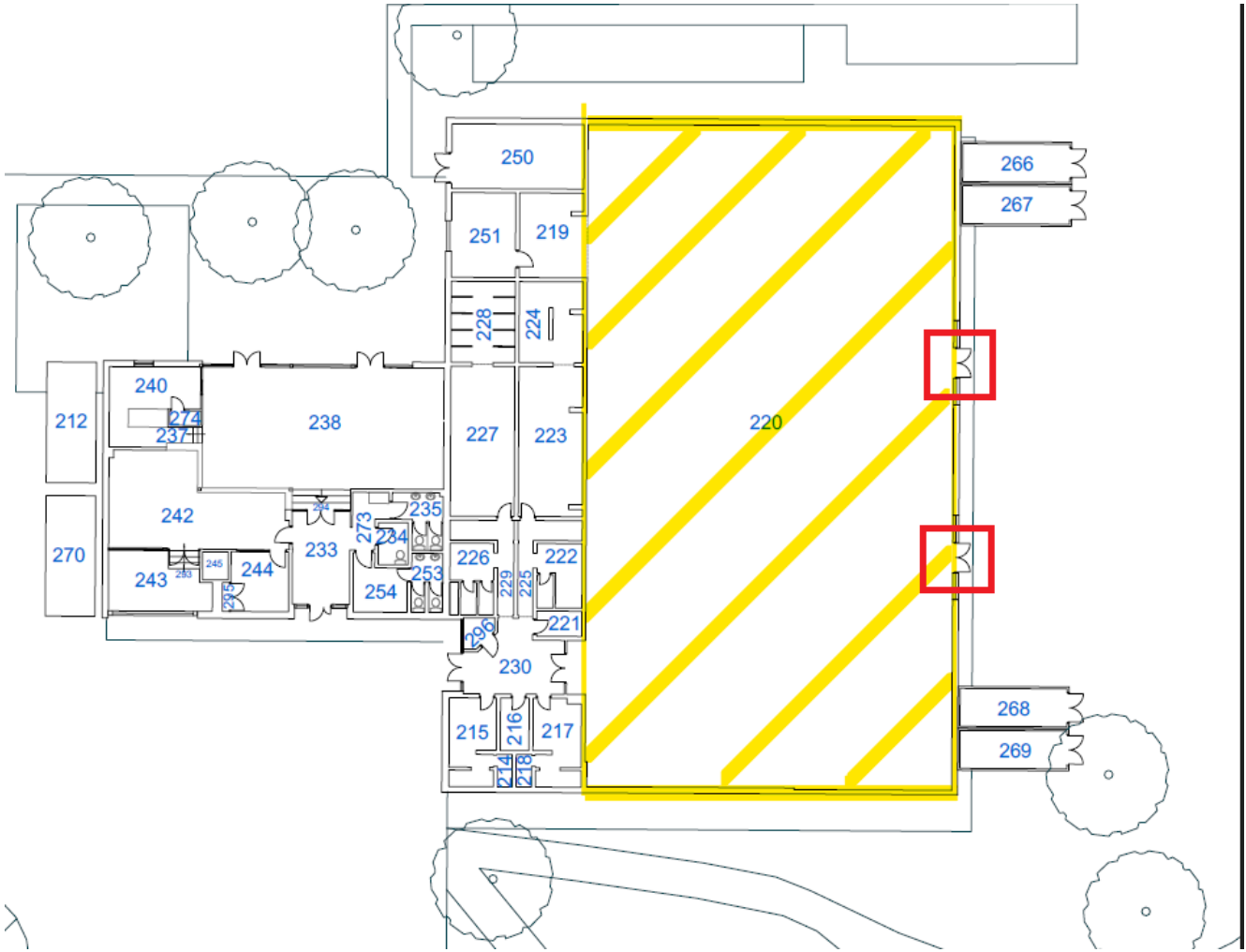
- Notes**
- 1 This drawing is © copyright Hampshire County Council. All rights reserved. reproduction permitted. All rights reserved.
 - 2 No dimensions are to be scaled from this drawing
 - 3 This map is reproduced from Ordnance Survey on behalf of the Controller of Her Majesty's Stationery Office © Crown Copyright. Unauthorised copying, distribution, or use in any form and may lead to prosecution or civil proceedings. 1100919180, (2012)

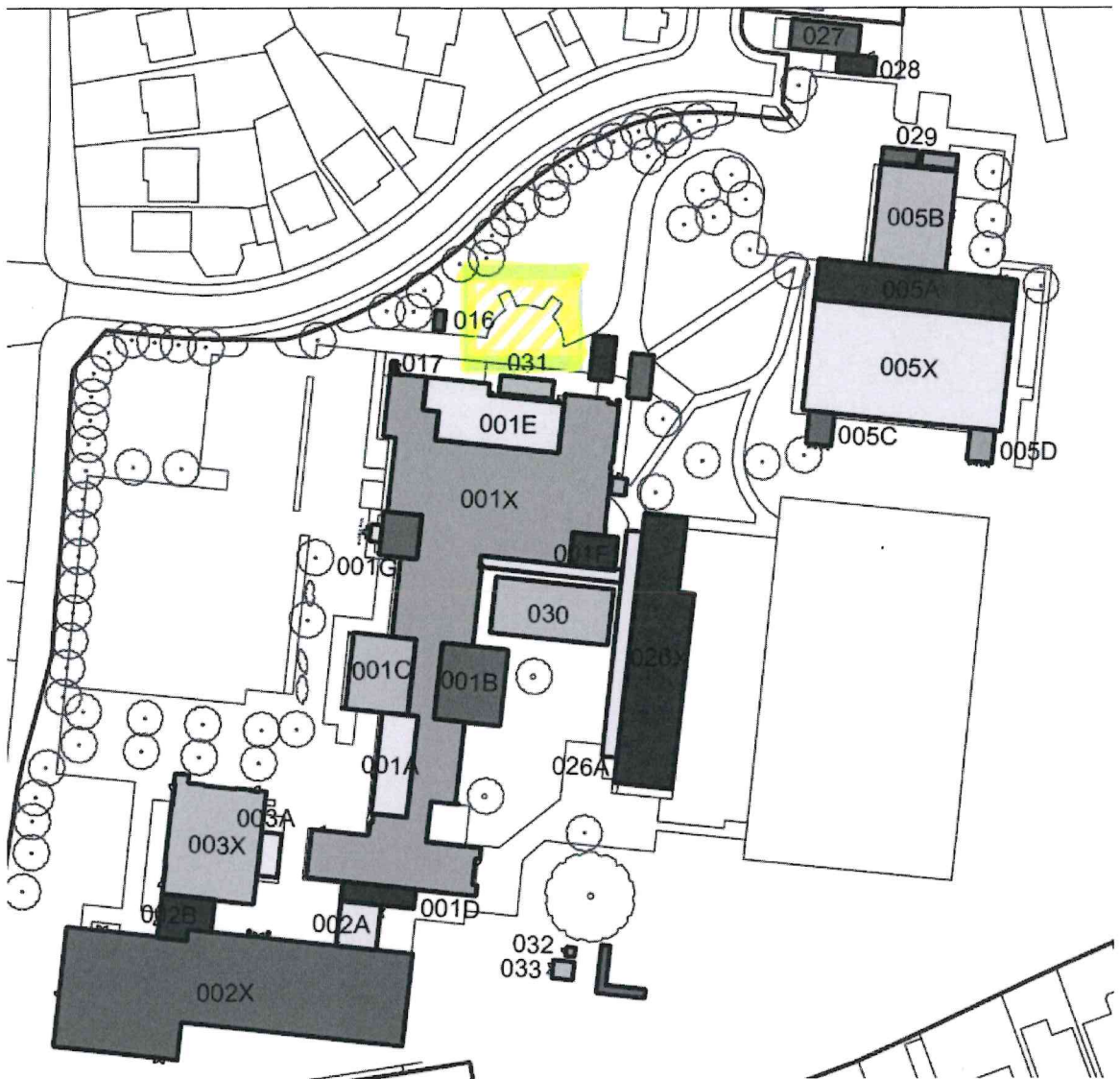
rev	description	date	by
A	Plans updated following site survey	14/02/12	HJP
B	Updated for Carriageway purposes	07/02/13	HJP
C	HSS amendments. Changes made to Tech Book	30/10/14	LIS

PROJECT		SHEET CONTENTS	
The Haying College Hayling Island, PO11 0NU		Property Records Site Plan	
4147-10008000935		Sheet 1 of 6	
SCALE	1:750 @ A1 1:1500 @ A3	DATE	2005/2006
DRAWN	CadCap	CHKD	---
FILE REF	4147-10008000935-TheHayingCollege.dwg	DRAWING No.	01_Rec/001
		REVISION	C

RECORD DRAWINGS







KEY:



Licensable area



Fire Exits



Fire equipment